



ECO-LOGISTICS

GEOSCIENCES DATA

HEAVY MACHINERY



ABOUT ADGEX

THE BOARD OF DIRECTORS

ECO-LOGISTICS

GEOSCIENCES DATA

HEAVY MACHINERY

SOCIAL RESPONSIBILITY

Adgex Limited (“Adgex”) was incorporated on 29 March 2012 as an advanced geosciences data provider and within 12 months the directors recognised a better value for our shareholders would be to expand the core offerings to include heavy machinery and transportation infrastructure. The name, Adgex, stands for Advancing Geosciences Solutions. It conveys our aspirations to be leaders of geosciences solutions internationally.

Our Vision

To be a world-leading geosciences solutions business, as partners of emerging customers and consecutively growing the company confidently, using high level innovations and best experiences to be an advanced geosciences provider in the world.

Operating from Australia, Adgex provides target-centric approach to Market Company’s Promotion. Adgex has close cooperation with some of the leading engineering companies operating in the industry.

Our Strategy

- Create and deliver outstanding value to Shareholders, Customers, Employees and Community.
- To expand with our customers and maintain long term commercial relationships.
- To grow our network of partners and prosperity of company.
- To provide geosciences solutions internationally.
- To provide environmental awareness and its sustainability in relation of companies activities.

Our Objectives

- Equal opportunity for all stakeholders
- Excellence in all operations
- Safety, Quality and Environment
- Ethics and Integrity
- Leadership, passion and courage
- World-class performance

The core expertise of Adgex lies in providing client-oriented solutions. Our team in charge of the of specialist services: project management, design, production management, supervision during assembly and adjustment, construction, testing and commissioning, maintenance and operation services. Our key engineers have had an international experience in these fields more than 20 years.

Our mission

Adgex mission is designing and management of company’s business activities with maximum results for all Stakeholders. Our responsibilities are to provide the reputable image to the company, social guaranty to our employees and forward-looking attitude to our partners.



Victor Uzlov
Managing Director
M.E. (ACA) Hons, USSR MBA (Distinction), Moscow

Mr. Uzlov is responsible for Risk and Capital, Investment and Funding, Continuous Disclosure, Corporate Governance and Safety and Environment. He has track record as a determined “turnaround” specialist, project implementer and business developer, including conception to exit strategist.

Dr. Vasily Morosov
CEO & Executive Director
M.E. (Mining), USSR PhD in Technical Sciences, Moscow

Dr. Vasily Morozov holds PhD in Technical Sciences, and ME in mining. Dr Morozov is responsible for Risk and Capital, Continuous Disclosure, Corporate Governance and Safety and Environment. He brings extensive experience in management and mining projects.



Dr. Ihar Dubatouka
Chief Technology Officer & Executive Director
M.E. (Civil), PhD (Technical Sciences)

Dr. Dubatouka is responsible for Risk and Capital, Continuous Disclosure, Corporate Governance and Safety and Environment. His key expertise lies in the field of structural engineering.

Oxana Uzlova
Corporate Services Manager & Executive Director
B.Ed. (Pedagogical), USSR,MBA (Distinction), Moscow

Ms. Uzlova is responsible for Risk and Capital, Investment and Funding, Continuous Disclosure and Corporate Governance. Ms Uzlova brings with her international experience gained in Kazakhstan, Russian Federation, Germany and United Kingdom.



Shaneel Mudaliar
Non-executive Director & Company Secretary
LLB (USP), LLM (Corporate and Commercial Law – UNSW)

Shaneel is responsible for Risk and Capital, Investment and Funding, Continuous Disclosure and Corporate Governance. He has more than 10 years’ experience as a corporate and commercial lawyer.

Adgex business activities

The world market of geosciences is one of the biggest markets. In spite of the largest volume of sales in terms of raw materials, there are various factors behind increase of prices in geosciences sector. The main reason of price growth is insufficient supplies of raw materials, primarily due to a lack of manufacturing capacity. Increase of capacity is hampered by the remoteness of fields from customers. Thus, geosciences infrastructure, especially logistic is more capital-intensive and more time is required for its construction.

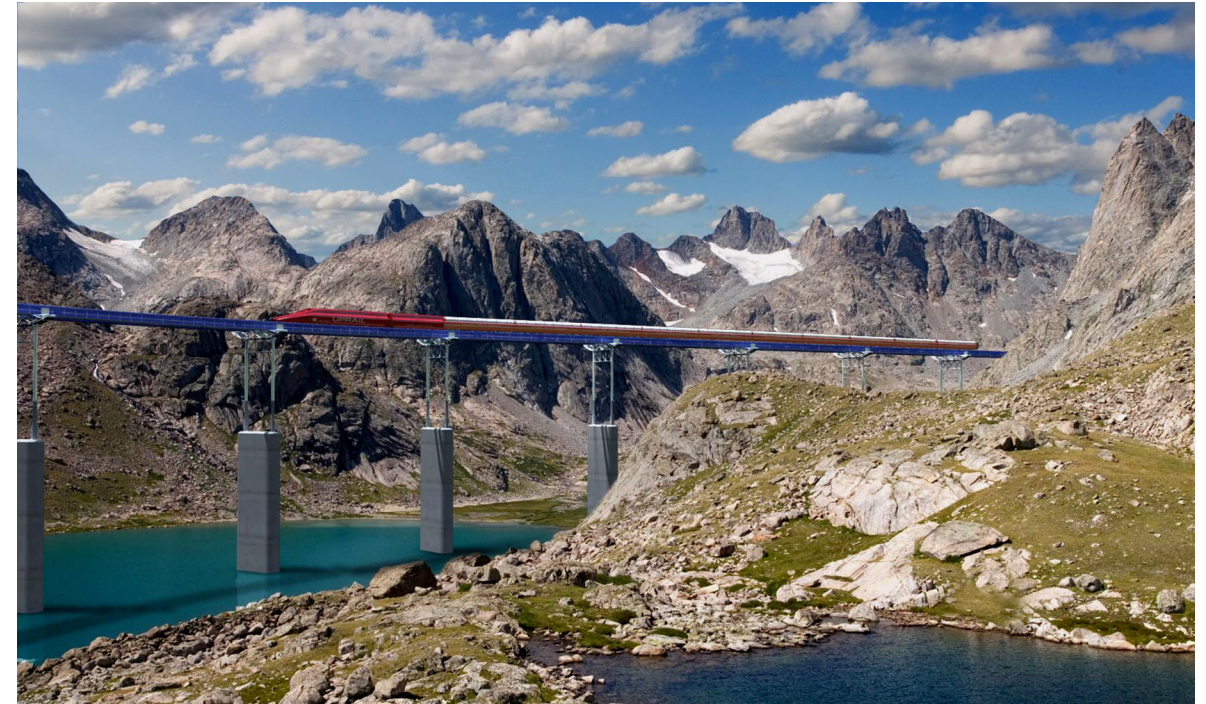
Adgex is an emerging advanced geosciences solutions provider based in Sydney, Australia. Our business activities are focused in Australia, Africa and Asia growing geosciences markets. Our expertise is comprising of exploration, field development, and environmental friendly transportation solutions including high volume port solutions.

The core expertise of Adgex is adopting individually customised approach and working within budget set by our clients. Adgex Priority is co-operating with our customers for a cost-effective, flexible and reliable solutions to take customers' commodities to the destined market.

ECO-LOGISTICS

GEOSCIENCES DATA

HEAVY MACHINERY



UPRAIL

Nowadays mining industry, metal industry and power-producing (thermal power plants) are absolutely dependent on rail and sea transport. This is explained by the fact that huge volumes of coal and ore are transported every year (for example, more than 2 billion tons of iron ore and 7 billion tons of coal are produced every year in the world).

Whereas, iron ore and coal deposits planned for development are located at a distance starting from 400 km from the sea in Australia to 700 and over 1000 km from the sea in Brazil and African countries.

The researches proved that the most efficient tracks from the viewpoint of transportation customers in the market of high volume commodities are the tracks with the haulage distance of 150+ km and capacity 30+ Mtpa.

Foreshadowed by a rapidly growing market and increasing distance of mines from ports, UPRAIL becomes highly competitive alternative to current traditional railway.

UPRAIL is implemented as an advanced light railway, providing the haulage capacity more than 50 Mtpa over the distances of more than 100 km on the inclines of up to 5 per cent. The rolling stock consists of small freight trains with 40-50 ton capacity each. Trains function on automatic modes, providing the average traffic rate 90 km/h on an elevated track structure, fully customised to suit any terrain with operations 24 hours.

The UPRAIL track structure is fully customisable to suit any terrain and withstand many of weather conditions. It is assembled from pre-manufactured widely known and factory produced components with good reputation and service life. All components of the track structure can be delivered at any point in the world in a standard 40-pound container directly to the construction site and manufactured directly there with special lightweight equipment.

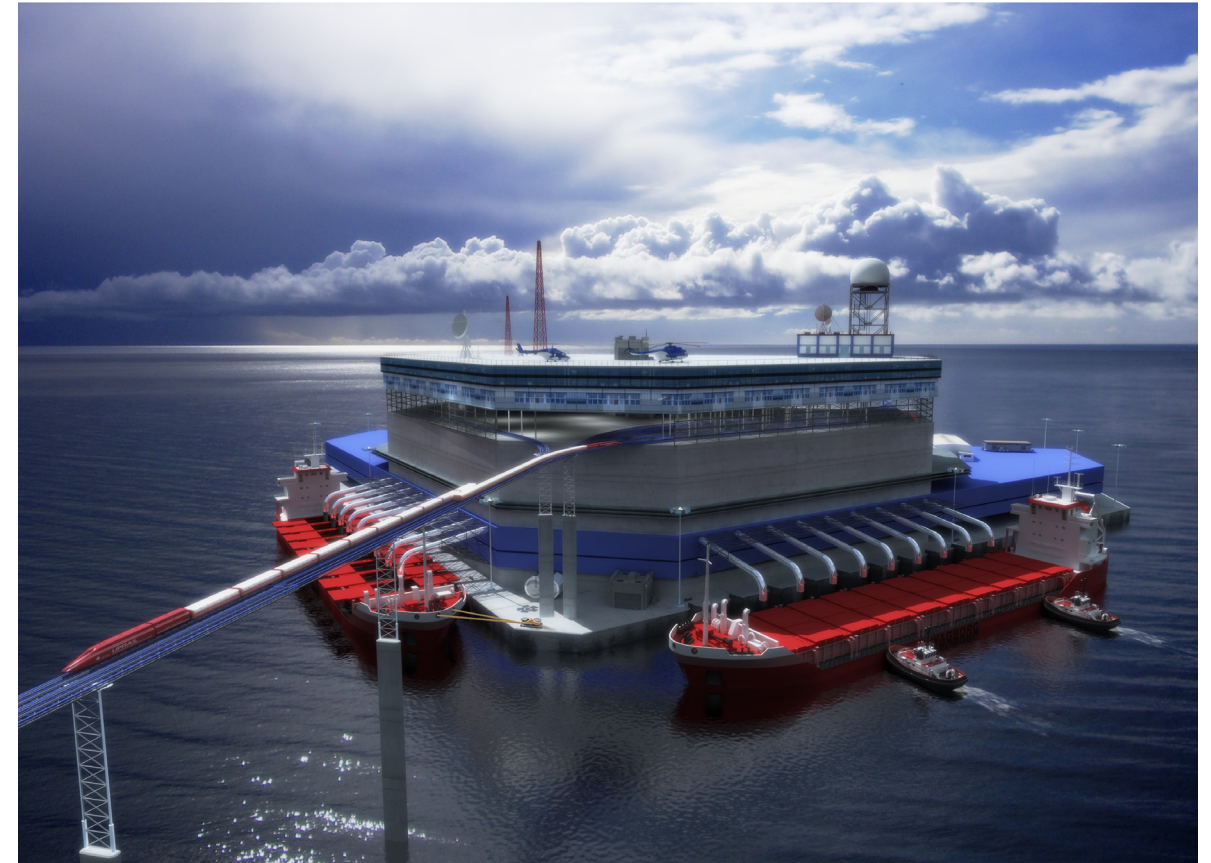
Thus Uprail transportation system, with its low cost of material can be used in the construction of freight routes in different climatic zones of the world with environmentally sensitive atmosphere, so it will require a small parcel, and will have a minimal effect on the environment, during construction and operational phases.

This will ensure to set the technological foundation for scalable implementation of future projects in the world. UPRAIL satisfies either an alternative solution for miners commencing operations or solutions for big operators. It is advancing new standards in economic efficiency and environmental sustainability in rail transport. Due to reducing CAPEX around 40% of conventional heavy haul rail, UPRAIL can be deployed with initial capacity starting from 20Mtpa and can be scaled up to increase capacities up to 50Mtpa and more.

Uprail advantages solve the problem of high volume commodities haulage from remote areas in harsh topographical and climatic conditions with significant reduction in CAPEX & OPEX, providing financial stability and opening new opportunities for participants of commodities market.

Highlights of UPRAIL:

- Highly lucrative haulage up to 60 Mtpa over any terrain and distance enable to implement large scale projects using direct direction corridor.
- Significantly reducing CAPEX and OPEX forms an advantage over the conventional haulage solutions.
- UPRAIL with, lower emissions, lower energy use, minimal land disturbance, lower consumption of construction materials.
- All weather operational, no down time in floods, no obstruction to fauna.
- Financing is available for resource projects.
- UPRAIL addresses the 4 key concerns of high volume transportation: Rectification and Optimisation of Corridor, Technological Independence, Economic Efficiency and Ecological Sustainability leading to a superior transport solution by any measure.



Off-shore Port Terminal

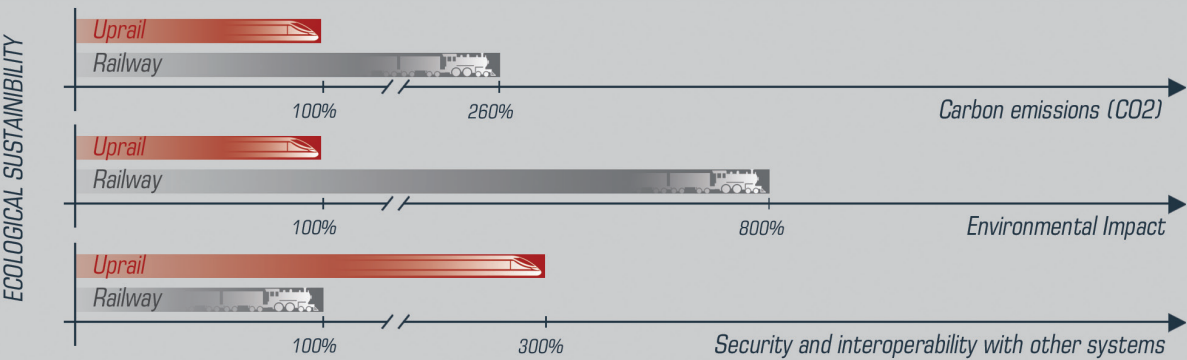
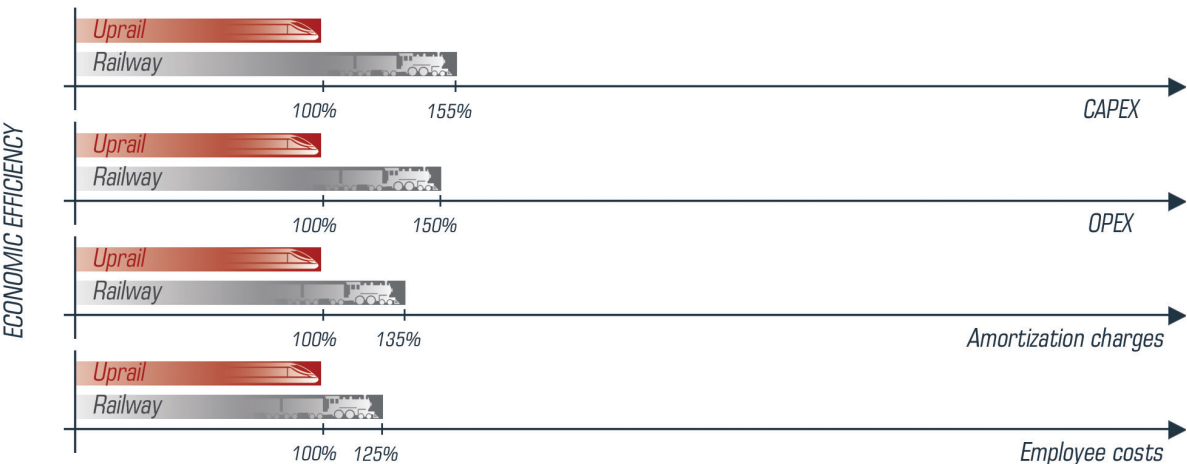
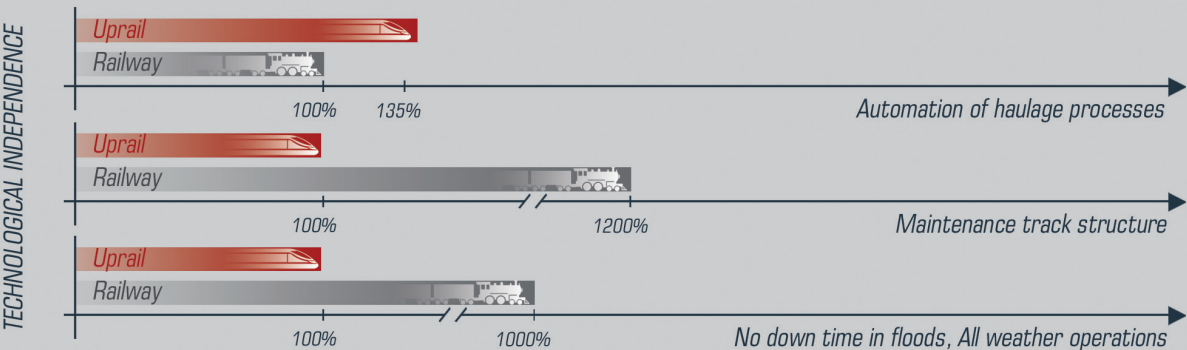
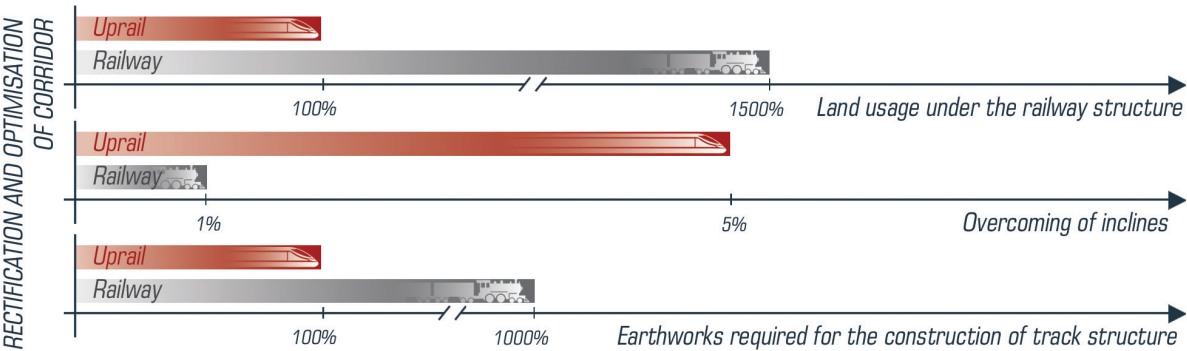
Nowadays more than 80 per cent of world commodity turnover is transported by sea. Sea transport plays the main role in the world trade and globalization. The share of bulk cargo haulage in volume of goods transported by sea is about 40 per cent. Sea ports is core node where bulk commodities are paid by consumers and loaded to their vessels. Thus, the sea port becomes the centre of logistic in modern network of transport infrastructure.

However, today hundreds of bulkers with time-charter rate of \$ 100,000 per day are waiting to be loaded / unloaded at ports during 7-10 days. The same situation is around the world. The loss of only one bulk carrier is on average A \$ 1M. This happens only for a single reason. The lack of existing of deep-water ports in the world leads cargo bulkers to wait their turn and stand in the roads.

In order to reduce the cost of transportation of bulk cargoes the size and deadweight of vessels involved in this process is constantly growing. Whereas the process of increasing of bulk carriers' carrying capacity created the problem of shortage in deep port facilities. The redevelopment of existing ports and dredging of port waters and approach canals for large vessels is huge expensive due to a growing shortage of dredging equipment and constant requests for free vast areas.

Adgex has the ability to extend the UPRAIL track directly to an Off-shore Port terminal. Traditional and effective industry practices are used for unloading of wagons and loading of raw materials through an Off-shore Port. The Port capacity of up to 100 Mtpa. Its infrastructure has the capability of non-stop 24 hour operation with three ship loaders for the port at any given time. Our port's solution provides opportunities to load Panamax and Capesize vessels directly in open see at the same time, less than 24 hour.

Comparative Analysis of Uprail and other railway systems



Intellectual property

03 of May 2013 Adgex has acquired Exclusive rights to “Know How” relating to elevated track structure known as “UPRAIL”.

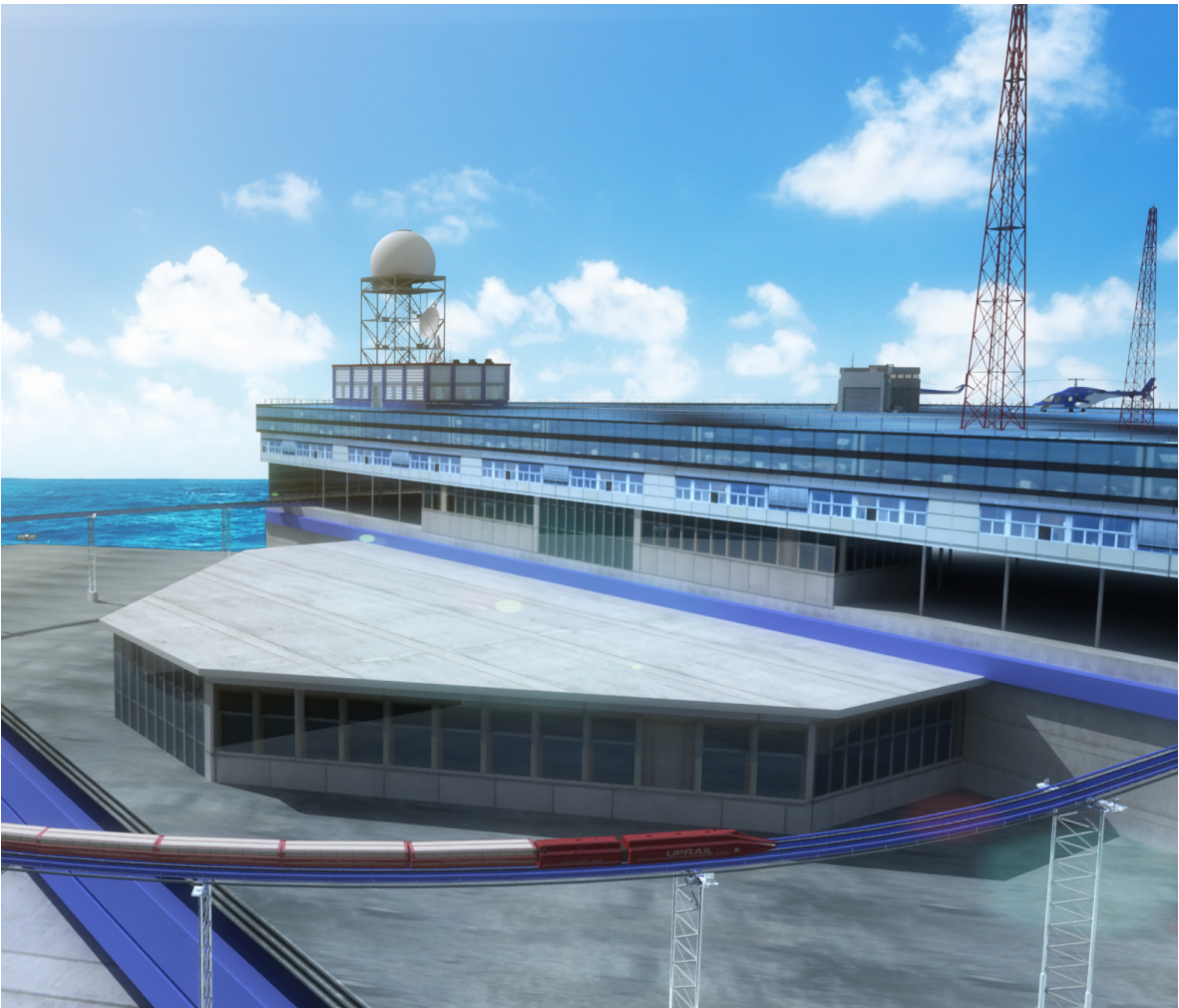
The intellectual property acquisition has increased Adgex’s capitalisation, and as the company continues to expand its operations it will maintain to increase ownership to intellectual property assets relating to its business.

Australian provisional patent application “An elevated railroad and a method of providing an elevated railroad” prepared and filed by Phoenix Intellectual Property lawyers.

This very important invention has based principles of the lateral and longitudinal stability of the light rail track structure. It became the unique base of Uprail’s implementation.

UPRAIL advantages solve the problem of high volume commodities haulage from remote areas in harsh topographical and climatic conditions with significant reduction in CAPEX & OPEX, providing financial stability and opening new opportunities for participants of commodities market, including new miners commencing operations or for big operators.

Adgex is in the process of raising more funds to complete the project documentation relating to UPRAIL’s capability with distance approximately from 300km and capacity of up to 60 Mtpa, together with an Off-shore Port terminal with capacity of 100 Mtpa, operating on a 24 hour basis. The completion of this technical milestone will justify implementation of eco-logistics to traditional haulage of high volume commodities.





Adgex is oriented on CLIENTS including geosciences companies (both private and public sectors), investment companies, banks and other financial institutions, partnerships, joint ventures, government agencies and trans-national agencies.

We provide the next SERVICES:

Solid minerals

A successful exploration program is focused on utilising the most effective methods and assessments that will help our customers to make the most of their mineral targets. Under our expert guidance and with our state-of-the-art targeting, assessment and development tools, we can minimise risks of our clients, cut costs and reduce time frames.



Our independent assessments and advices are provided by our skilled consultants with extensive knowledge of the processes of ore body formation and distribution within a wide range of geological and tectonic settings.

Our exploration services involve the integration of complex data sets which are used to generate and refine targets, identify controls on ore bodies, and delineate prospective structures and sequences.

The resource value is maximised through the application of leading geological modeling and resource estimation techniques, as well as complying with JORC and CIM reporting requirements.

- Exploration Project Management
- Corporate Advisory, Resource Economics & Valuation Services
- Innovative thinking and promotion
- Geological Mapping and Analysis of Drill Hole Data
- Mining Geology





Oil & Gas

ADGEX provides a comprehensive range of consulting services to the petroleum sector, in conjunction with its associates in Australia, Russia and overseas. Adgex has carried out a wide range of geological studies. Our key specialises have unique experience in preparing independent reports for corporate and statutory purposes, including prospectuses and information memoranda related to acquisitions, options, disposals and mergers.

We have a high level of petroleum services for exploration and producing interests throughout Russia, Kazakhstan, Ukraine and Uzbekistan.

- Management Services Exploration and Production of oil and gas
- Geological and Geophysical Studies.
- Reservoir & Production Engineering.
- Corporate Advisory, Resource Economics & Valuation Services
- Basin Studies & Project Initiation

Groundwater

Adgex is aimed to be involved in technically challenging projects through direct involvement or a supportive role within project. The company can adopt the technology and stuff for completing of aims according to standards and practise of any terrains in the shortest period of time. Particularly strong are our expertise and long-term relations of the company on the territory of Russia and former USSR countries. Here, we performed a series of unique projects in remote inaccessible areas.

The main purpose of our work in Groundwater is the investigation of the required amount of groundwater given quality, operating conditions which meet the geological, technical, economic, environmental and other requirements. We are capable of providing a wide range of key capabilities with evaluation of performance and compliance with applicable standards, which are listed below:

- Field investigations
- Assessment and analysis
- Design and development of monitoring water bodies systems
- Regulatory assistance
- Environmental water
- Development of ecological programs





Adgex has commercial agreements to provide state-of-the-art heavy machinery equipment's to our clients. We provide customers with a wide array of machinery as well as solutions to owning, leasing equipment and finance through to maintenance and resale. Adgex has close cooperation with some of the leading engineering companies operating in the industry.

Our Heavy Machinery Department designs and manufactures special machinery and equipment of various sizes for different climatic and specific operating conditions. The core expertise of Heavy Machinery lies in providing client-oriented solutions. This involves the design, production management, supervision during assembly and adjustment, construction, testing and commissioning and operation services. Our key engineers have had more than 20 year's experience in these areas in different countries over the world. Thus, the accumulated experiences of designing and installation supervision are able to take order either for unique individual specimens or large-scale production.



Our range of products includes the next transport lifting and mining equipment:

- bucket wheel excavators;
- bottom-hole loading elevators;
- spreaders;
- steeply inclined conveyors and loading elevators;
- belt conveyors and feeders;
- electric bridge cranes for general purpose;
- metallurgical cranes;
- gantry and semi-gantry cranes for special purpose;
- wharf cranes;
- port handling systems for ships;
- rotor stacking collectors;
- car dumpers;
- bucket elevators;
- special reduction gears;
- roller conveyors;
- tongs, grab buckets, cross bar

SOCIAL RESPONSIBILITY

The community is faced with pollutants and carbon emissions continuously. Adgex understands that due diligence and care for the commitment of environment is not only necessary parts of conducting its business operations but also are advantageous to its business and professional reputation. Nevertheless Adgex commits to its social responsibility in all of its activities to protect and sustain the environment, in accordance with the requirements of the law and expectations of the community.

Adgex Limited is in the business of devising advanced geosciences solutions. All of Adgex business activities have direct relation on to the people via mediated impact of our own products and services and that of our subcontractors.

Our business maxim is reduction of carbon footprints in all processes that surround our business activities. The social role of our business is commitment to the Environment for providing sustainable and eco-solutions.

Environment

The future of international geosciences industry depends on how it can lower its total impact on the state of ecosystems, land usage, water resources, air quality, energy efficiency and ensure adequate biological coexistence with wildlife, for sustainable operations.

Adgex's objectives are to:

- incorporate the protection and sustainability of the environment in its projects;
- adopt sustainable engineering principles to reduce and restrict the amount of waste materials and emissions;
- minimise the environmental impacts on all of its projects, e.g. protection of local flora and fauna;
- increase environmental awareness and its sustainability with all stakeholders.

Adgex's management is committed to:

- planning, developing, implementing and monitoring of relevant business processes, plans and procedures to manage and minimise all environmental impacts that may result from its project operations;
- engaging in development and improvement of business processes, plans and procedures to meet its environmental objectives;
- compliance with current environmental legislation, legal requirements and achievement of environmental objectives; and
- promoting communication about environmental and sustainability management as a normal component in all aspects of its project work.



Adgex Limited (ACN 156 556 035)

suite 409, 3 Ferntree Place,
Epping NSW 2121, Sydney, Australia

tel. +61 2 8004 5509

fax +61 2 8003 9725

info@adgex.com

www.adgex.com

